

*Strata*  
HOME™

## Cordless Electric Spin Mop



P/N 37930

# User's Manual

## SAFETY WARNINGS AND GUIDELINES

Please read this entire manual before using this device, paying extra attention to these safety warnings and guidelines. Please keep this manual in a safe place for future reference.

- Do not immerse the Spin Mop Body in water or other liquids.
- Remove the batteries from the Handle if it will go unused for a lengthy period of time.
- This device contains a Lithium-polymer battery in a Detachable Battery Pack. Dispose of the battery pack only in accordance with local, state, or federal regulations for electronic waste.
- Remove the Detachable Battery Pack from the Mop Body before charging.
- Charge the Detachable Battery Pack before first use and at least once every three months to keep the battery fresh and capable of holding a full charge. Use only the AC power adapter that is included in the package.
- The motor temperature increases with continuous use. It is suggested to not use the device continuously for more than 20 minutes to avoid motor overheating.
- If the motor overheats, the overheating protection circuit will engage. Wait for the machine to fully cool before attempting to turn it on again.
- Empty and dry the Water Tank after each use. If you used detergent, waxing oil, or other substances, rinse the tank out with clean water.
- This machine is intended for use on smooth, hard floor surfaces, such as tile, marble, linoleum, etc. Do not attempt to use it on windows, walls, carpeted floors, etc.

## CUSTOMER SERVICE

The Monoprice Customer Service department is dedicated to ensuring that your ordering, purchasing, and delivery experience is second to none. If you have any problem with your order, please give us an opportunity to make it right. You can contact a Monoprice Customer Service representative through the Live Chat link on our website [www.monoprice.com](http://www.monoprice.com) or via email at [support@monoprice.com](mailto:support@monoprice.com). Check the website for support times and links.

## PACKAGE CONTENTS

Please take an inventory of the package contents to ensure you have all the items listed below. If anything is missing or damaged, please contact Monoprice Customer Service for a replacement.

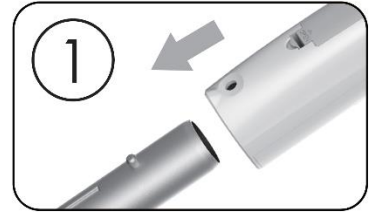
- 1x Spin mop handle
- 1x Spin mop body
- 1x Expandable aluminum pole
- 1x AC power adapter
- 2x Mopping cloths
- 2x Waxing cloths
- 1x Measuring cup
- 1x User's manual

# PRODUCT OVERVIEW

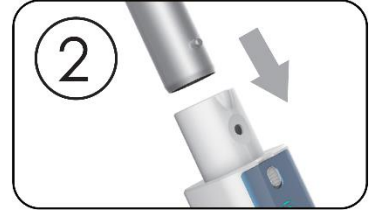


## ASSEMBLY

1. Insert the top of the **Expandable Aluminum Pole** (the narrower end with the groove in the back and locking slots on the front) into the **Handle** until the locking button locks into the hole on the handle.



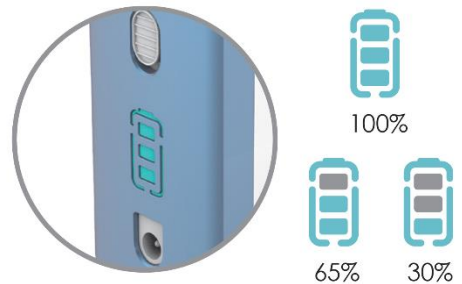
2. Insert the bottom of the **Expandable Aluminum Pole** into the **Mop Body** until the locking button locks into the hole on the body.



3. Remove the battery compartment cover on the handle, then insert two AAA batteries (not included) into the compartment, taking care to match the polarity markings inside the compartment. Replace the battery compartment cover.

## CHARGING

The **Detachable Battery Pack** should be charged before first use and at least once every three months to keep it fresh and capable of holding a full charge. It should also be charged when the battery capacity indicator on the pack has only a single illuminated LED.



To charge the battery, first press down on the locking switch on the battery pack with one hand, then remove it from the **Mop Body** with the other hand. Plug one end of the included **AC Power Adapter** into the DC jack on the battery pack, then plug the other end into a nearby AC power source. When the battery capacity indicator has three illuminated LEDs, the battery is fully charged. Unplug the AC power adapter from the wall outlet, then unplug it from the battery pack.

## OPERATION

1. Attach two **Mopping Cloths** or **Waxing Cloths** to the spinning pads on the bottom of the **Mop Body**, depending on whether you want to clean or wax the floor. The Mopping Cloths have a pink bottom and the Waxing Cloths are blue.
2. Remove the rubber cap from the **Water Filling Hole**.
3. Use the included **Measuring Cup** to pour water, water with detergent, or liquid wax into the **Water Tank**.
4. Replace the rubber cap over the **Water Filling Hole**.
5. Step lightly onto the **Power Switch ON/OFF** to turn the spin mop on. The **LED Light** on the front of the **Mop Body** will illuminate.
6. Pull back the **Handle** to unlock the **Expandable Aluminum Pole** from the **Mop Body**. For best results, the pole should be held at about an 80° angle while mopping.
7. Slide the **Lock Button** on the **Expandable Aluminum Pole** upward to release the pole lock, then slide the pole up or down until it is at a comfortable length. Release the **Lock Button** to lock the pole length in place.
8. Press the **Liquid Spray Button** on the handle to spray liquid onto the floor.
9. Press the **Start/Stop Button** on the handle to start the spin mop. Press it again to stop the spin mop operation.
10. Use the **Liquid Spray Button** and **Start/Stop Button** as needed to mop or wax the floor. Note that after 10 minutes of non-operation, the machine will enter Sleep Mode. Step lightly on the **Power Switch ON/OFF** to wake it up.
11. When you are finished mopping, press the **Start/Stop Button** on the handle to stop the spin operation, then step lightly on the **Power Switch ON/OFF** on the **Mop Body** to turn the mop off.
12. Remove the rubber cap from the **Water Filling Hole**.
13. Pull the **Handle** all the way back to make the mop as flat as possible. Invert the **Mop Body** over a sink to empty the **Water Tank** of water. If you used detergent or wax, rinse out the tank with clean water, then empty it again.

14. Replace the rubber cap over the **Water Filling Hole**.
15. Push forward on the **Handle** until the pole locks in place in the **Mop Body**.
16. Slide the **Lock Button** on the **Expandable Aluminum Pole** upward to release the pole lock, then push the pole fully in. Release the **Lock Button** to lock the pole length in place.
17. Remove the **Mopping Cloths** or **Waxing Cloths** from the spinning pads on the bottom of the **Mop Body**, then rinse them in clean water to clean off any accumulated dirt, detergent, wax, or other residue.
18. Store the mop in cool, dry place.

## TROUBLESHOOTING

Q1: The **LED Light** on the front of the **Mop Body** turns on, but the **Start/Stop Button** and the **Liquid Spray Button** on the **Handle** do not respond.

A1: Replace the AAA batteries in the **Handle**.

Q2: Pressing the **Liquid Spray Button** does not spray liquid.

A2: Ensure that there is liquid in the **Water Tank**. Try pressing the button several times to expel any air in the water feed tube.

Q3: The **Nozzle** is blocked.

A3: Use a needle or pin to clear the obstruction.

Q4: The **Nozzle** leaks.

A4: There may be solid particles in the water or wax mixture. Empty the **Water Tank**, rinse it out, and add new liquid.

## SPECIFICATIONS

Model	37930
Water Tank Capacity	10.1 fl. oz. (300ml)
Battery Type	Lithium-ion
Battery Capacity	2500mAh
Rated Voltage	14.4V
Rated Power	60 watts
Charging Time	About 2.5 hours
Operating Time	About 30 minutes
Noise Level	< 60dB
Dimensions	48.0" x 15.4" x 3.3" (1220 x 390 x 85 mm)
Weight	6.9 lbs. (3.15kg)