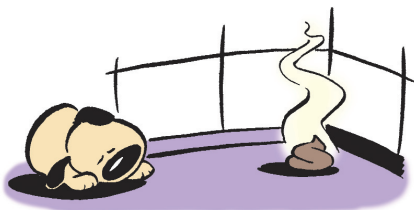


# The Do's and Don'ts of Crate Training



## Do's ...

**Do** buy a **MidWest** Home large enough for your dog when he grows up. However, if the home is too big when your pup is small, he may eliminate in one corner, then go to another corner to sleep. **MidWest** Divider Panels solve this problem.



**Do** get your pup used to his new home gradually.

**Do** supervise your pup anytime he is free in your home. Supervision is what allows you to direct behavior. Chewing, elimination, barking, and all other behaviors are all dependent on your direction. If allowed to be unsupervised, he will begin to direct his own behavior and schedule.



**Do** provide soft, washable bedding in the home so that it is comfortable and warm. Make the inside of the home as cozy as you can. Keep it clean and free of fleas.

## Don'ts ...

**Don't** put "housebreaking pads" or newspaper in your pet's home. We are trying to take advantage of the pup's natural instinct NOT to go in his home.

**Don't** force your new pup into the home for the first time. Plan on taking plenty of quality time with him the first few days to get him accustomed to his new surroundings.

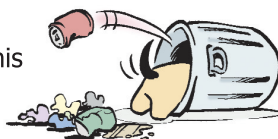
**Don't** leave your very young pup in his home all day. At 6 weeks, a pup can hold his bladder about 4 hours, by 8 weeks—5 hours, by 12 weeks—6 hours and by 5-6 months a pup should be able to "hold it" for an 8 hour work day.



**Don't** let your new pup roam through your house unsupervised. Keep an eye on him so that when he sniffs and circles (an indication he is about to go) you can quickly and gently guide him to the door and outside.



**Don't** punish your pup by putting or forcing him into his home. Your pup's home should be his secure place, it should not be associated with punishment, fear, or anything negative.



## Additional Benefits

**Controls Chewing** - Your puppy can't get to inappropriate objects like furniture or shoes.

**Safety** - A **MidWest** Home will keep your puppy from under foot when workmen or visitors come over. Also, he won't be able to slip out the door.

**Hospital Room or 1st Class Cabin** - Provides sick or healing pets a private hospital room, or keeps him safe while traveling in your car.

**Less Behavioral Problems** - Trained in this manner, dogs are more secure, self confident and easier to train with less chance of nervousness and anxiety.

For a Complete Listing of Products

**Wire Crates • Tent Crates  
Ex Pens • Barriers • Kennels ...**

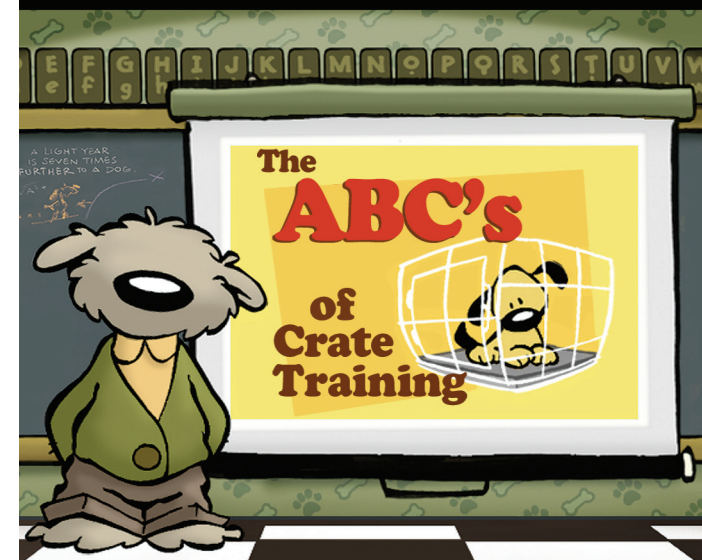
- Come Visit Our Website

[www.midwesthomes4pets.com](http://www.midwesthomes4pets.com)



P.O. Box 1031 Muncie, IN 47308 USA  
800 428 8560

PART # 5003 (111)



## How To

Quickly & Successfully  
Crate Train  
Your New Puppy

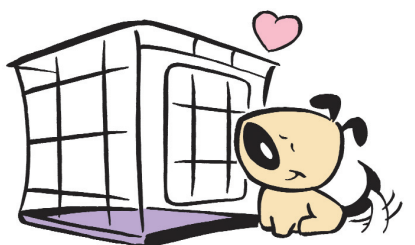


Dogs in the wild live in a den which provides protection and a great deal of psychological satisfaction. All dogs, therefore, have a strong natural tendency to seek out this type of shelter.

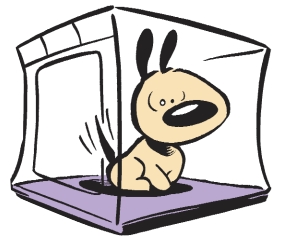


In your home, if your dog has no place to call his own, he will make feeble attempts to curl up under a table, a chair or some other choice location.

When you use a **MidWest** Home, you give your puppy a place to feel secure and something to get his back up against. He won't feel isolated because the pet home provides essential visibility and ventilation. Just like a baby in a playpen.



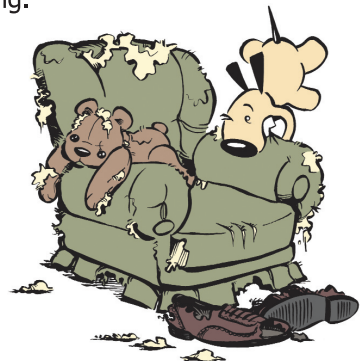
You will also be taking advantage of his natural instinct to keep his home clean, therefore, when he has to "go" he will try to hold it until you can take him outside to the proper area.



This will teach him a schedule and help him avoid accidents.



With a **MidWest** Home, your puppy will have fewer behavioral problems like excessive barking and chewing.



But most of all, by providing him a safe and secure home, he'll be happier and more self confident.

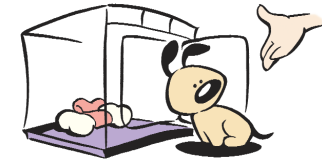


### A: Acquaint your puppy with his new home

Simply start from early puppyhood and have your puppy sleep and rest in his home. Almost without trying he will train himself to seek security and comfort inside his little "dog room".

### B: Be gentle

Encourage your puppy to go into his home on his own. If necessary, toss a little treat in the home. **DON'T FORCE HIM!** He may quickly back out or be shy, but that's normal. Just take it slowly. At first, don't close the door on him, let him go in and out on his own.



Once he is happy and unafraid of his new home, simply restrain him at the door with your hand. Make him stay in the home for a few minutes, then gradually increase the time and be sure to praise him!

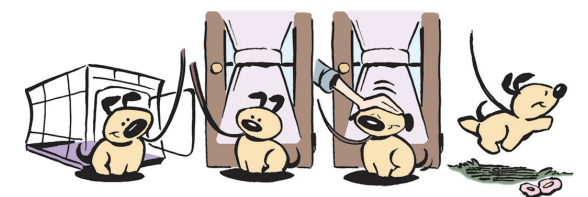
### C: Closing the Door

Once he is comfortable with this, (probably a few hours or days of short training sessions) simply restrain him at the door with the door—again praising him lavishly. Soon he will be secure in his home with the door closed. Slowly you can get further and further away from him, always praising his accepting behavior. Eventually, the pup will sit quietly and sleep in his home with the door closed.



### D: Direct his elimination

Understand that little puppies need to "go" about every 2-4 hours. On a schedule, (such as after feeding, before bedtime, first thing in morning) let your puppy out, teach him the route to the door, praise him at the door and take him out to the part of the yard you want him to use. Very quickly, you are teaching him an elimination schedule that will stay with him for the rest of his life.



As your puppy gets older (4-6 months) you can gradually leave him in his home for longer periods of time because he can "hold it" longer. Soon he can be in his home all day, if necessary, until someone arrives to let him out.



### E: Elimination Control

Initially, the home may be too big when your pup is small. He may eliminate in one end, then go to the other end to sleep. **MidWest** Divider Panels are designed to solve this problem and help you control his elimination. By allowing you to adjust the length of your pet home as your puppy grows, you can purchase the appropriate sized home for the adult dog but control the size as the pup grows! Simply insert the Divider Panel allowing enough room for your puppy to lie down. Nature will do the rest! By instinct, your puppy will want to keep his "home" and himself clean, so instead of eliminating where he has to lay down, he will let you know when it's time to "go." As your puppy grows, move the Divider Panel back further in the home. Eventually, your dog will be big enough where you can remove the Divider Panel all together!

