

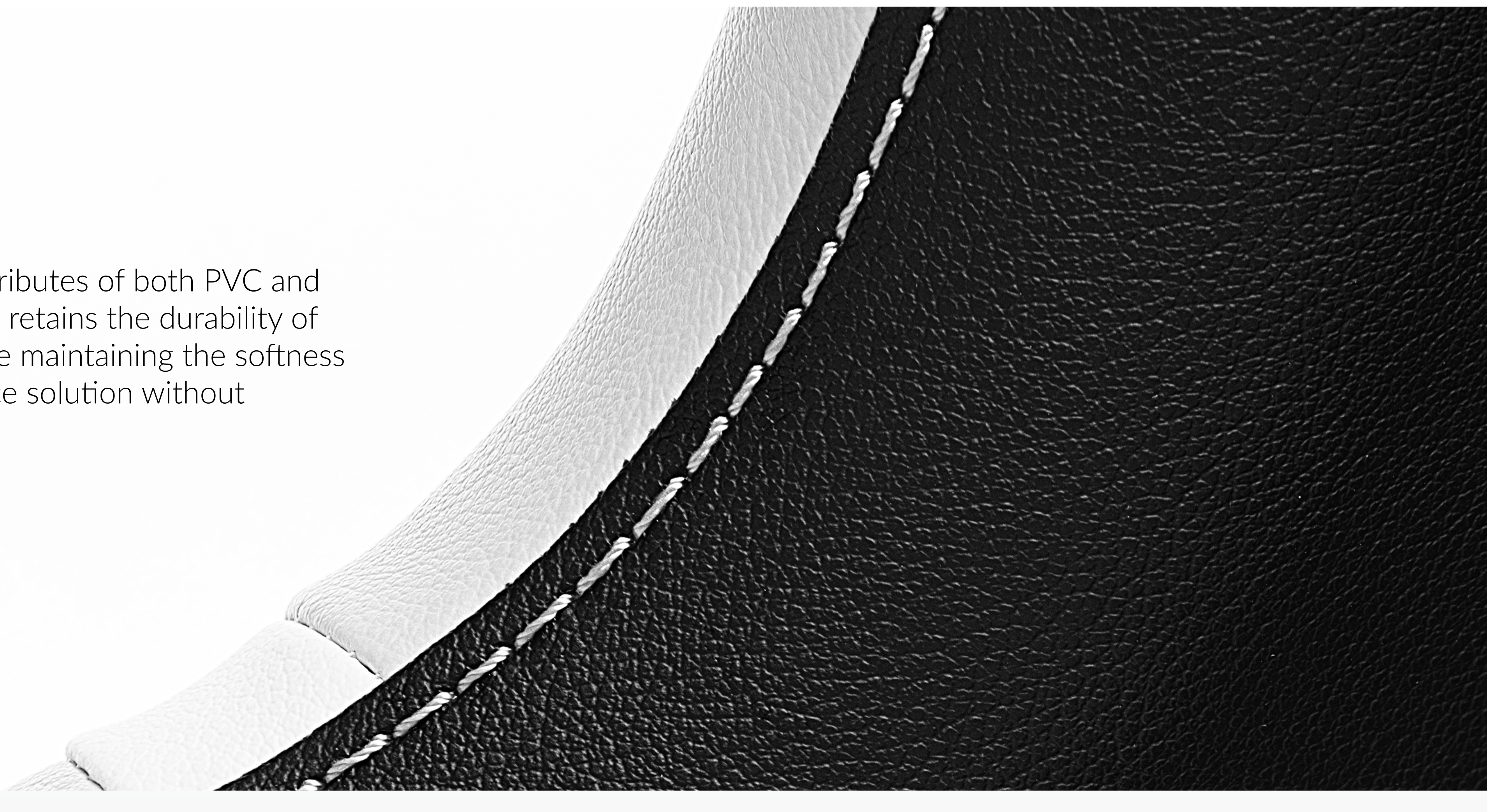
Racing Series  
SL2000



Highlight Features

PUC

PUC combines the best attributes of both PVC and PU faux-leather into one. It retains the durability of PVC for everyday use, while maintaining the softness of PU for a low maintenance solution without sacrificing comfort.



Effortless Assembly

Our patented "Slide-in" hardware allows for a quick and easy one-person assembly. The chair can be assembled in seconds by simply sliding the backrest into the seat, removing any alignment and hardware complexities for a hassle-free, one-person process.



Construction & Materials

UPHR Foam

Our Ultra Premium High Resilience Foam boasts a density well above industry standard. While standard High Resilience foam stands up to approximately 2.5lbs per cubic foot, our UPHR foam can withstand 62% more per cubic foot. The foam prolongs the lifespan of the chair by preventing deformities from long periods of use, inching it closest to the characteristics of memory foam.



Penta RS1 Casters



The motorsports inspired style extends all the way down to the casters. Engineered to be carefree, the Penta RS1 Casters are coated with polyurethane (PU) for soft and smooth gliding on any surface. (color matching chair)

Aluminum Alloy 5 Star Base



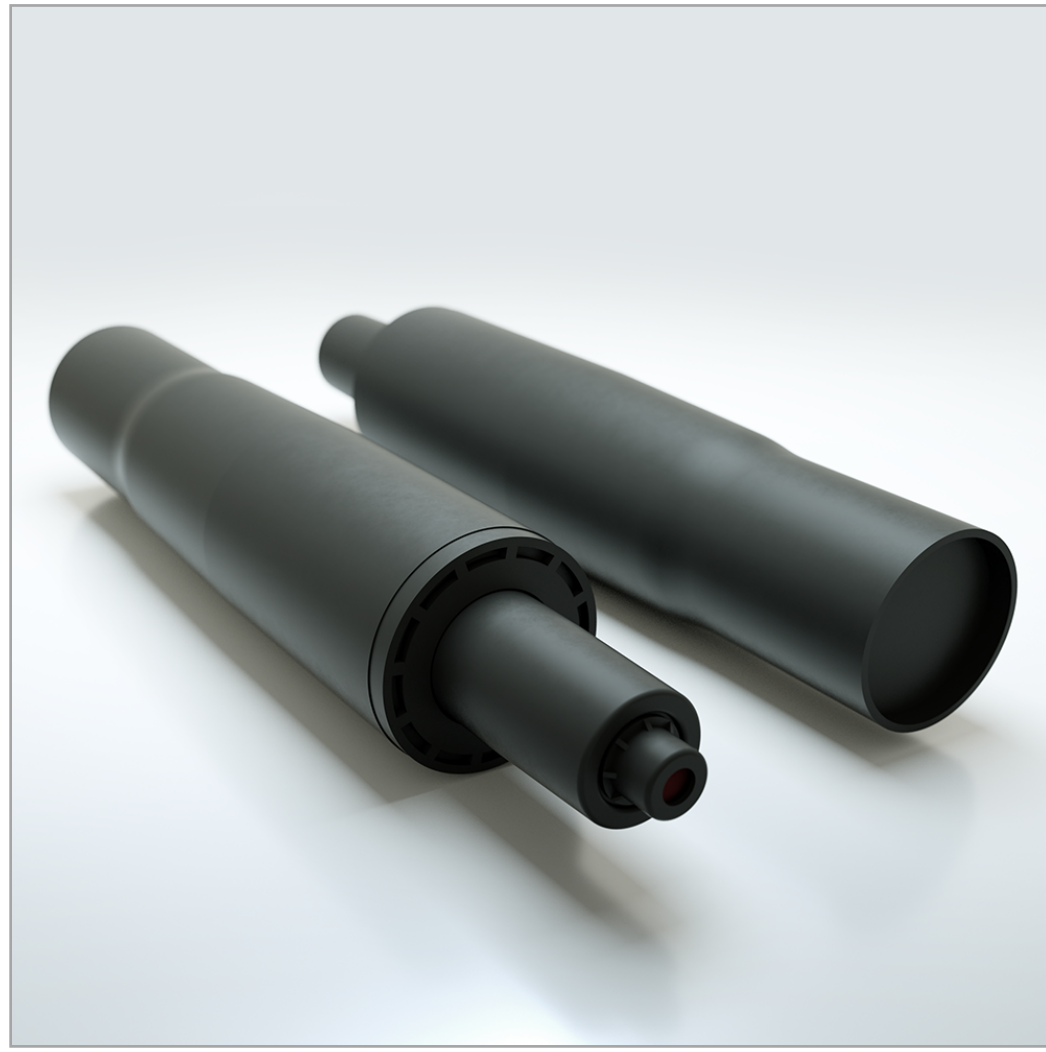
As one of the critical support structure of the chair, the five star base is fabricated with aluminum alloy to provide stability, lightweight construction and lasting durability, providing the necessary strength to ensure longevity.

Steel Frame



The integrated steel skeleton that forms the shape of the gaming chair ensures long-term durability. The steel frame includes a 10 year warranty, keeping you secure and stable throughout any intense gameplay.

Gas Lift



The SL2000 is supported with an industrial grade class-4 gas lift, providing the extra adjustability you need. Set the chair to your preferred height, to keep you at an optimal level relative to your setup to prevent sore shoulders.

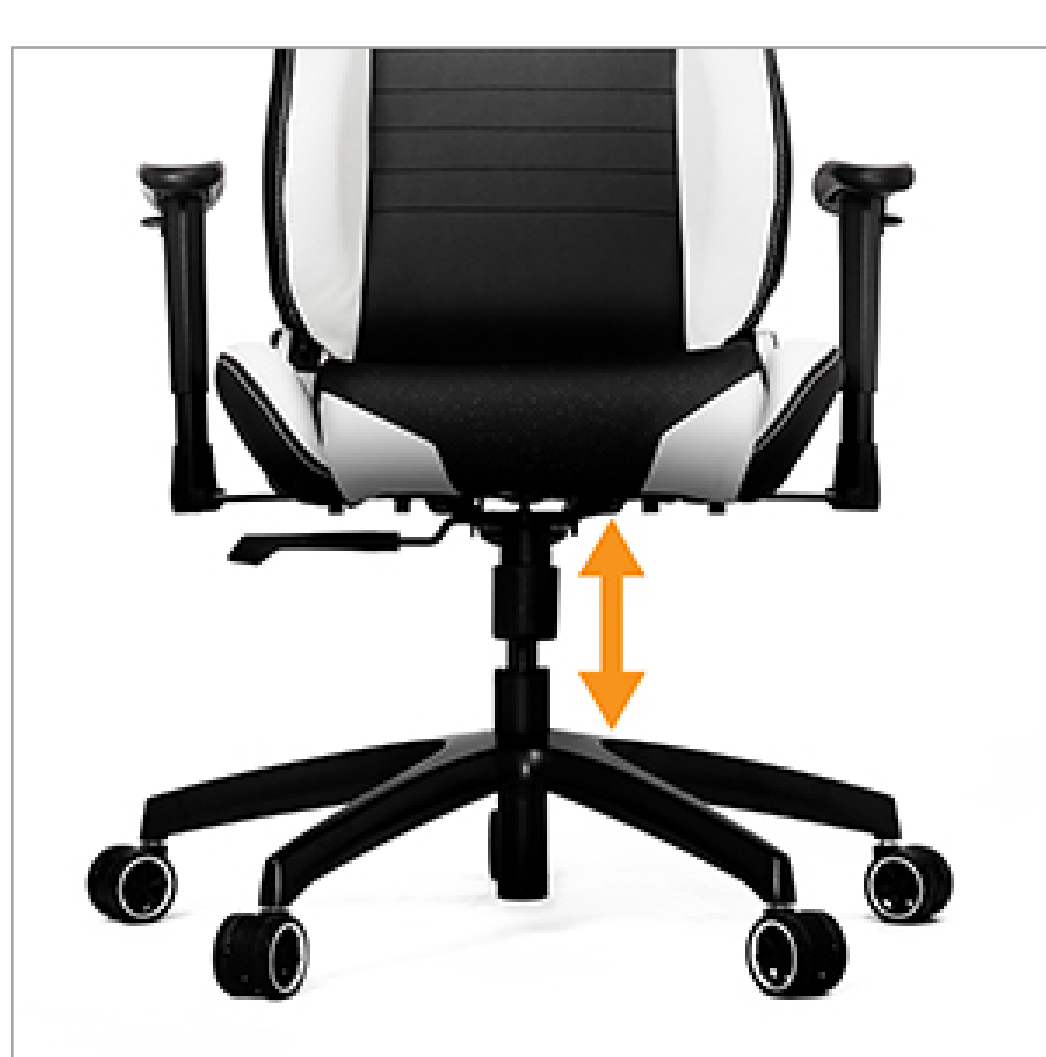
Posture Perfect Ergonomics

Lumbar Support & Neck support

The SL2000 comes with our standard memory foam neck and lumbar support, to give you the extra padding you need for any position. Both cushions are easily removable for increased adjustability and correct posture.



Adjustable Seat Height



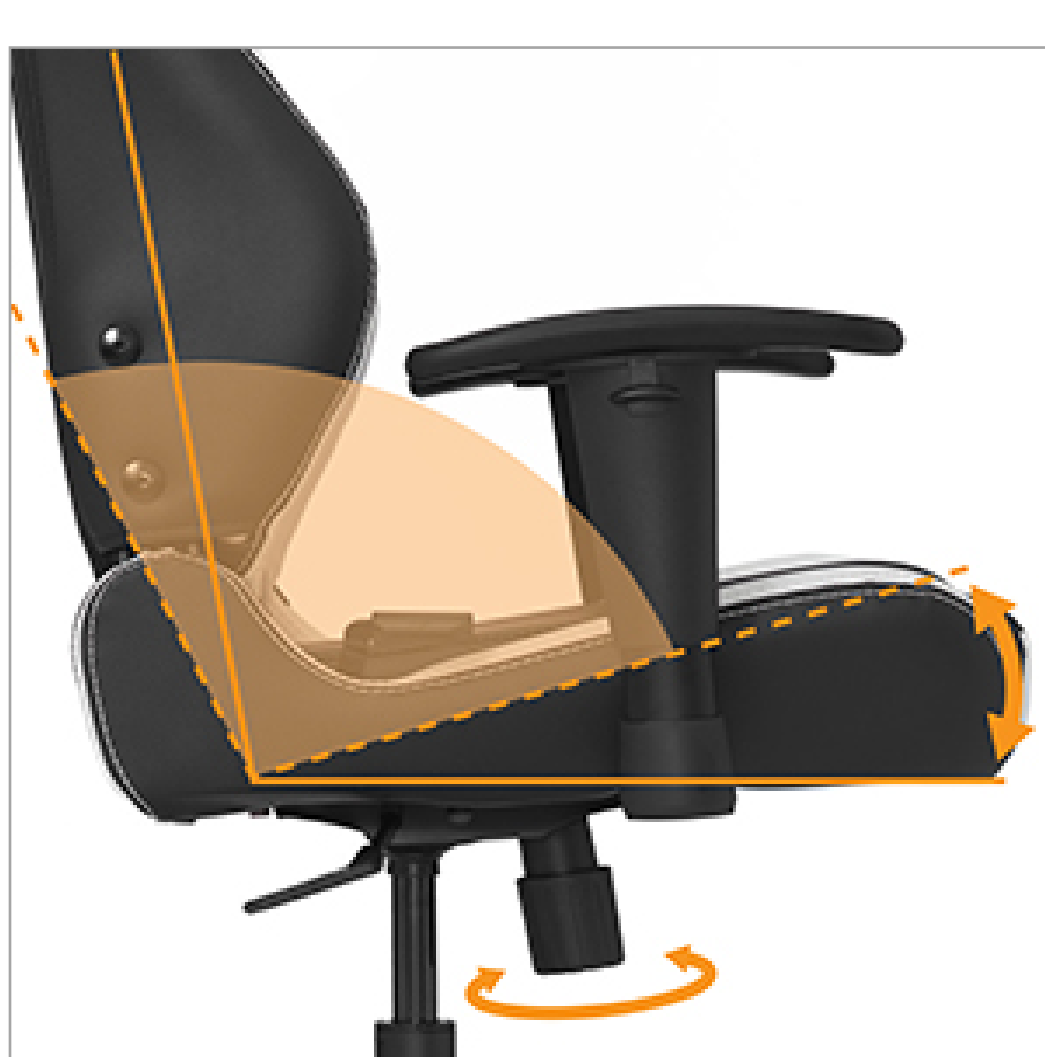
Having a good range of height adjustment allows you to be at an optimal level relative to your desk and PC setup. Our chairs are ergonomically designed to cater to a wide range of body shapes and height for long-lasting comfort.

Adjustable Backrest



Features an independently adjustable backrest, allowing you adjust the angle of your sitting position throughout your gaming sessions (up to 140 degrees).

Adjustable Tilt with Locking System



The chair's tilt tension is easily adaptable to your body weight, allowing you to lean back with ease and comfort. The tilt mechanism is also engineered to be lockable in 4 different tilt positions.

Adjustable 2D Armrests



Adjustability extends to the armrests with 2 directional adjustments. The ergonomically designed armrests keep your forearms comfortable and steady regardless of body shape and habit, to prevent sore shoulders.

Specifications

Model :	VG-SL2000
Colors :	<b>Black Edition-</b> Carbon Black / Red / Blue / Green / White / Pink / Purple <b>White Edition-</b> Black / Red / Blue / Green / Purple
Max Load:	150 kg / 330 lbs
Recommended Height:	up to 193cm / 6'4"
Recommended Weight :	up to 110kg / 240lb
Materials :	Steel (frame), UPHR Foam, PUC Leather, Aluminum Alloy (base)
Package Dimension :	87 x 67 x 33 cm / 34 x 26 x 13 in
Overall Height (incl. base) :	1250-1350 mm / 49.2-53.2 in
Backrest Width (shoulder) :	540 mm / 21.3 in
Backrest Width (lumbar) :	480 mm / 19 in
Seat Width :	530 mm / 20.9in
Seat Depth :	460 mm / 18 in
Net Weight :	23 kg / 50.6 lbs
Gross Weight :	26.5 kg / 58 lbs

Product Comparison

	PL6000	PL4500	SL5000	SL4000	SL2000	SL1000
RGB LED Kit		✓	✓			
Hygenn X		✓				
Heavy Duty Base	✓	✓				
PUC	✓	✓	✓	✓	✓	✓
Effortless Assembly	✓	✓	✓	✓	✓	✓
Steel Frame	✓	✓	✓	✓	✓	✓
UPHR Foam	✓	✓	✓	✓	✓	✓
5 Star Base	Aluminum Alloy	Aluminum Alloy	Aluminum Alloy	Aluminum Alloy	Aluminum Alloy	Metal
Penta RS1 Caster	75mm/3"	65mm/2.5"	65mm/2.5"	65mm/2.5"	65mm/2.5"	65mm/2.5"
Armrests	4D	3D	4D	4D	2D	2D
Gas Lift	Class 4	Class 4	Class 4	Class 4	Class 4	Class 4
Recommended Height	175.3 - 203.2cm / 5'9" - 6'8"	up to 200cm / 6'6"	up to 193cm / 6'4"	up to 180cm / 5'11"	up to 193cm / 6'4"	up to 193cm / 6'4"
Recommended Weight	up to 169kg / 350lb	up to 120kg / 260lb	up to 120kg / 260lb	up to 90kg / 200lb	up to 110kg / 240lb	up to 110kg / 240lb