



Model: MW914T-35BK

IMPORTANT:

PLEASE NOTE: WHEN YOU OPEN THE CARTON, CAREFULLY CHECK THE UNIT AND MAKE SURE THERE IS NO DAMAGE. IF YOU HAVE ANY PROBLEMS WITH ASSEMBLING THE UNIT, WITH HOW THE VARIOUS FUNCTIONS WORK OR WITH DAMAGE OR MISSING PARTS PLEASE CALL 1-800-459-4409 (MONDAY TO FRIDAY, 8:30AM TO 5:00PM, EST) IMMEDIATELY FOR SERVICE.

NOTE: DO NOT RETURN UNIT TO THE STORE BEFORE CALLING THE TOLL FREE NUMBER. DO NOT DISPOSE OF YOUR CARTONS UNTIL YOU ARE COMPLETELY SATISFIED WITH YOUR NEW ELECTRIC FIREPLACE HEATER.

NOTE: Light bulbs may become loose during shipping. If the flame effect is dim or does not work, please check that light bulb or bulbs are finger tight in socket. See instructions for replacing bulb or bulbs.

INSTRUCTION MANUAL

ATTENTION:

- 1) Find a location for the electric fireplace heater that is protected from direct sunlight.
- 2) Do not plug the unit into the power outlet before reading all instructions.

IMPORTANT SAFETY INSTRUCTIONS

WHEN USING ELECTRICAL APPLIANCES, BASIC PRECAUTIONS SHOULD ALWAYS BE FOLLOWED TO REDUCE THE RISK OF FIRE, ELECTRIC SHOCK, AND INJURY TO PERSONS, INCLUDING THE FOLLOWING:

- 1) Read all instructions before using this electric fireplace heater.
- 2) This electric fireplace heater is hot when in use. To avoid burns, do not let bare skin touch hot surfaces. Keep combustible materials, such as furniture, pillows, bedding, papers, clothes, and curtains at least 3 feet (0.9 m) away from the front of the unit and keep them away from the sides and rear.
- 3) Extreme caution is necessary when any heater is used by, or near, children or individuals with disabilities and whenever the fireplace is left operating and unattended.
- 4) Always unplug fireplace when not in use.
- 5) Do not operate any electric fireplace heater with a damaged cord or plug or after the heater malfunctions, has been dropped or damaged in any manner.
- 6) Do not use outdoors.
- 7) This electric fireplace heater is not intended for use in bathrooms, laundry areas and similar indoor locations. Never locate heater where it may fall into a bathtub or other water container.
- 8) Do not run cord under carpeting. Do not cover cord with throw rugs, runners, or similar coverings. Arrange cord away from traffic area and where it will not be tripped over.
- 9) To disconnect fireplace, turn controls to off, then remove plug from outlet.
- 10) Connect to properly grounded outlets only.
- 11) Do not insert or allow foreign objects to enter any ventilation or exhaust opening as this may cause an electric shock or fire, or damage the heater.
- 12) To prevent a possible fire, do not block air intakes or exhaust in any manner. Do not use on soft surfaces, like a bed, where openings may become blocked.
- 13) A heater has hot and arcing or sparking parts inside. Do not use it in areas where gasoline, paint, or flammable liquids are used or stored.
- 14) Use this electric fireplace heater only as described in this manual. Any other use not recommended by the manufacturer may cause fire, electric shock, or injury to persons.

- 15) Avoid the use of an extension cord because the extension cord may overheat and cause a risk of fire. However, if you have to use an extension cord, the cord shall be No. 14 AWG minimum size and rated not less than 1875 watts.
- 16) Caution: Do not plug this product into a receptacle controlled by a wall switch or dimmer.
- 17) When storing or transporting the unit and cord, keep in a dry place, free from excessive vibration and store so as to avoid damage.

SAVE THESE INSTRUCTIONS FOR FUTURE USE.

CAUTION:

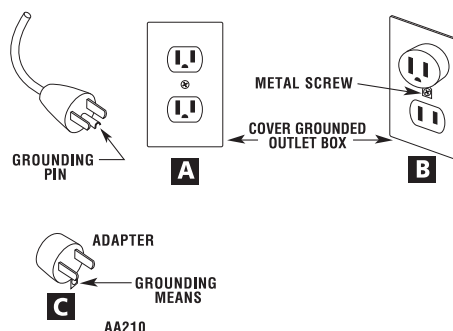
IF YOU USE THIS HEATER IN CONJUNCTION WITH A THERMAL CONTROL, A PROGRAM CONTROLLER, A TIMER OR ANY OTHER DEVICE THAT SWITCHES THE HEATER ON AUTOMATICALLY, REMEMBER TO OBSERVE ALL SAFETY WARNINGS AT ALL TIMES. THE ELECTRIC FIREPLACE HEATER HAS SAFETY OVERHEAT PROTECTION. IF THE OVERHEAT PROTECTION TRIPS, SWITCH OFF ALL SWITCH BUTTONS AND WAIT APPROXIMATELY 5 -10 MINUTES. IT SHOULD RESET AUTOMATICALLY ONCE THE UNIT COOLS DOWN.

WARNING:

PROCEDURES AND TECHNIQUES IF NOT CAREFULLY FOLLOWED WILL RESULT IN DAMAGE TO THE EQUIPMENT AND WILL EXPOSE THE USER TO THE RISK OF SERIOUS INJURY, ILLNESS OR DEATH.

THIS ELECTRIC FIREPLACE HEATER IS FOR USE ON 120 VOLTS. THE CORD HAS A PLUG AS SHOWN AT A IN ILLUSTRATION BELOW. AN ADAPTER AS SHOWN AT C IS AVAILABLE FOR CONNECTING THREE-BLADE GROUNDING-TYPE PLUGS TO TWO-SLOT RECEPTACLES. THE GREEN GROUNDING PLUG EXTENDING FROM THE ADAPTER MUST BE CONNECTED TO A PERMANENT GROUND SUCH AS A PROPERLY GROUNDED OUTLET BOX. THE ADAPTER SHOULD NOT BE USED IF A THREE-SLOT GROUNDED RECEPTACLE IS AVAILABLE.

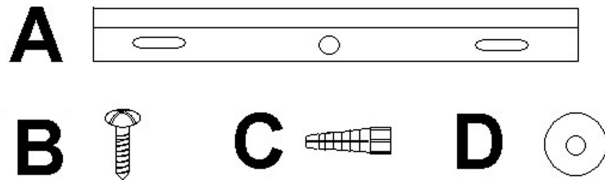
A 15 AMP CIRCUIT IS REQUIRED TO OPERATE THIS HEATER. IF THE BREAKER TRIPS WHEN THE HEATER IS USED THEN YOU MAY NEED TO MOVE THE HEATER TO ANOTHER LOCATION OR UNPLUG OTHER APPLIANCES THAT ARE ON THE SAME CIRCUIT. IF YOU REQUIRE AN EXTENSION CORD USE ONE THAT IS RATED AT 1875 WATTS.



PARTS LIST

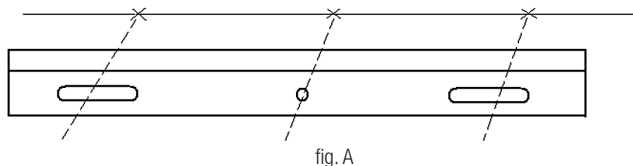
Fireplace.....	1
A) Mounting bracket.....	1
B) Mounting screws.....	3
C) Wall anchors.....	3
D) Washers.....	3

TOOLS REQUIRED: LEVEL, ELECTRIC DRILL, DRILL BITS 5/16 IN (8 MM), PHILLIPS SCREWDRIVER, HAMMER, SAFETY GOGGLES AND GLOVES.

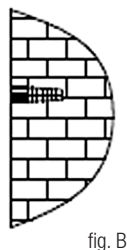


INSTALLATION

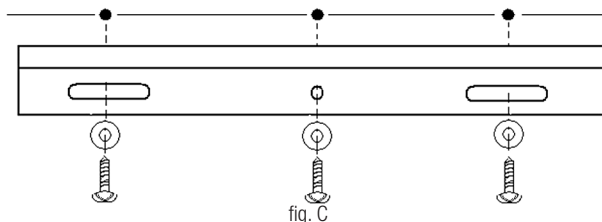
Step 1: Select the wall location where you want to hang your electric fireplace heater. Measure the area where the mounting bracket will be installed. Using the level, draw a guide line. Mark on the line where you will drill your holes for the mounting screws. Use the guide line as the center line to ensure your fireplace will be mounted straight and level. See Fig. A.



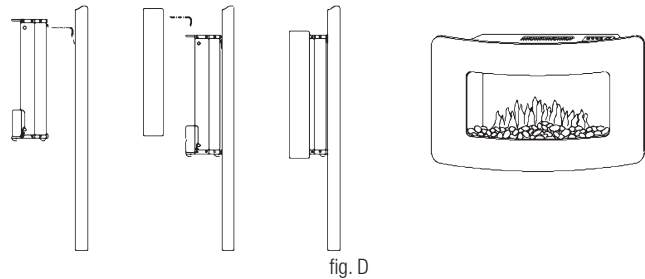
Step 2: Drill 3 holes 5/16 in (8 mm) on the marked locations. For holes that do not hit studs, use the supplied wall anchors (C). Install the wall anchors into the holes and gently tap them into place with a hammer, until the flange of the wall anchor is flush with the wall surface. See Fig. B.



Step 3: Secure the mounting bracket (A) to the wall with 3 mounting screws (B) and washers (D). See Fig. C.



Step 4: Mount the fireplace to the mounting bracket. The extruded flange on the back of the fireplace shall be fully inserted into the mounting bracket. See Fig. D.



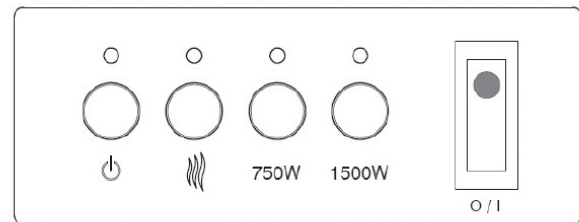
OPERATION

NOTE: The electric fireplace heater may emit a slight harmless odor when first turned on. This is caused by activating the internal heater components for the first time and should not occur again.

After reading complete instructions, confirm all controls on fireplace are in the OFF position. Plug the fireplace into a 15AMP/120Volt outlet. If the cord does not reach, you may use an extension cord rated for a minimum of 1875 watts. Once the fireplace unit has been properly connected to a grounded electrical outlet, it is ready to operate.

OPERATION BY THE CONTROL PANEL

The controls are located on the top of the fireplace unit.



O/I: Press this button for main power. The indicator light will turn on. See below for other control switches.

Power symbol: Standby button. Press this button once to turn on the fireplace. Press again to turn off all functions below.

Flame symbol: Press this button once for flame effect. The unit will be beep and the indicator light will be ON. The bulbs for flame effect will turn ON. To adjust the flame intensity, hold down the button - the flame optics will go higher or lower. Once you have found the desired setting, release the button. Pressing the button again will stop the flame effect.

750W: For low heat function - Press this button while the O/I and standby switches are in the on position for low heat. The indicator light will turn on.

1500W: For high heat function - Press this button while the O/I, standby and 750W switches are in the on position for high heat. The indicator light will turn on.

When the heater reaches to the desired temperature, the heater and 750W/1500W indicator light will turn off but the fan still keeps working with air flow.

NOTE: When the O/I or standby switch is turned OFF, all other heater functions will stop even though the switches may be in the ON position.

OPERATION BY THE REMOTE CONTROL

Plug in your electric fireplace heater and it will beep once, this means you have power and your remote is ready to operate your electric fireplace heater.



: Standby button. Press this button once the unit becomes energized and you can select the following functions as desired. Press this button again, the unit will turn OFF and enter standby mode.



: Press this button once for flame effect. The unit will be beep and the indicator light will be ON. The bulbs for flame effect will turn ON. To adjust the flame intensity, hold down the button - the flame optics will go higher or lower. Once you have found the desired setting, release the button. Pressing the button again will stop the flame effect.

750W: Press this button for low heat level. The unit will beep, the pilot light and indicator light will be on. The electric fireplace heater will give low heat level. Pressing once again will stop the low heat level function.

1500W: Press this button for high heat level. The unit will beep, the pilot light and indicator light will be on. The electric fireplace heater will give high heat level. Pressing once again will stop the high heat level function.



REMOTE CONTROL BATTERY REPLACEMENT

Replace with 2 AAA batteries.

WARNING: Do not mix old and new batteries. Do not mix alkaline, standard (Carbon-Zinc), or rechargeable (Nickel Cadmium) batteries.

MAINTENANCE

WARNING: Disconnect power and unplug the power cord before attempting any maintenance or cleaning to reduce the risk of fire, electric shock or damage to persons. The bulbs in your unit can become extremely hot. Allow at least 10 minutes between turning off the unit and removing the light bulbs to avoid the accidental burning of the skin.

RISK OF FIRE: DO NOT EXCEED THE RECOMMENDED BULB WATTAGE.

REPLACING THE LIGHT BULBS

Step 1: Remove the front cover by pulling it upward until the front cover has been removed from the 4 locking posts located on both sides. See Fig. E.

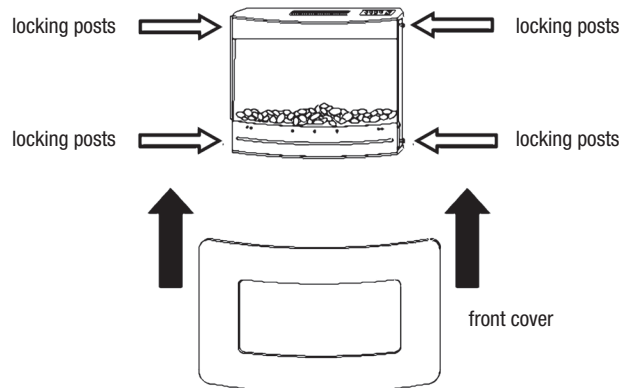


fig. E

Step 2: Then remove the rock bed from the fireplace. See Fig. F.

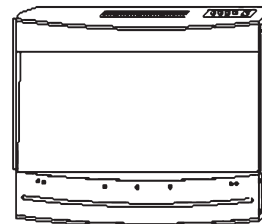


fig. F

Step 3: Remove the lower cover by loosening 11 screws as shown in Fig. G. You will find 3 x 40 watt type B-10 bulbs.

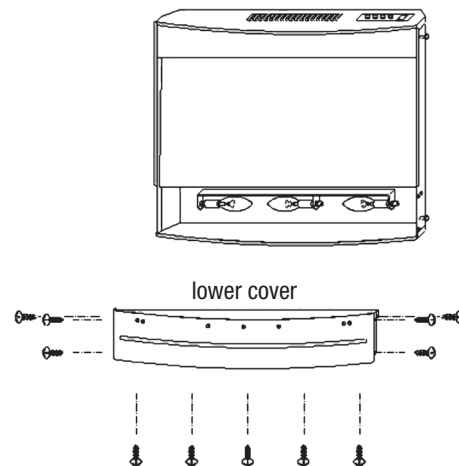


fig. G

Step 4: Loosen and remove burnout bulb(s) and replace with new bulb(s).

Step 5: Replace the lower cover and re-attach all the 11 screws.

Step 6: Replace the rock bed.

Step 7: Hold the front cover tightly and engage it with the 4 locking posts on both sides of the fireplace. Make sure the front cover has been completely put into ALL 4 locking posts before release your hands.

Step 8: Plug in the unit.

CLEANING

To clean unit first turn off controls on unit and unplug the unit from power source. To clean glass display panel; remove dust with clean dry cloth or to remove finger prints and other marks clean glass with clean damp cloth. Do not use abrasive cleaners or spray liquids on glass display panel surface. Metal and metal painted parts should be cleaned with damp cloth. Do not use abrasive cleaners or spray liquids on these surfaces.

REPLACEMENT PARTS

ITEM	PART #	QTY
Hardware kit	914T-35HWK#1	1
A) Mounting bracket.....		1
B) Mounting screws		3
C) Wall anchors		3
D) Washers.....		3

WARRANTY

Every electric fireplace heater is tested before it leaves the factory and it is guaranteed for one year. If the unit should fail to operate correctly within one year from the date of purchase, call customer service at 1-800-459-4409 (Monday to Friday, 8:30am to 5:00pm, EST). We will, at our discretion, either repair or replace the unit. It will have to be returned to us freight prepaid and we will return the repaired or replaced unit to you freight prepaid. The company's sole obligation is to repair or replace the unit.

This warranty is void, if in the opinion of Quality Craft, the unit has been tampered with, altered, misused, damaged, abused or used with the wrong power source. Light bulbs (and remote batteries) are not covered by this warranty. The warranty is for homeowner use only and does not cover units used in commercial situations.

WARRANTY CLAIM PROCEDURE

If a claimable defect occurs, please fill out a claim form through our website at www.qualitycraft.com or contact our customer service department at 1-800-459-4409 (Monday to Friday, 8:30am to 5:00pm, EST).

Before you make your claim call, please make sure you have:

1. The description of the electric fireplace
2. Proof of sale
3. Details regarding the defect
4. Name and address of the owner and installer

Claims must be filled out in writing and returned within six (6) months of appearance of defect. Failure to comply with this stipulation will make the warranty null and void. We reserve the right to a thirty-day (30) delay following receipt of claim in which to inspect the product. We assume no responsibility for labor costs, removing/replacing a previously installed product, transportation, or return of the product.

Imported by

Quality Craft

Laval, Quebec, Canada H7C 0A5
1-800-459-4409 (EST)
www.qualitycraft.com

Made in China